



West High Yield (W.H.Y.) Resources Ltd.

Midnight Gold Project

www.whyresources.com

TSXV: WHY

Location: Record Ridge South Property is 10 km SW of Rossland, British Columbia, Canada

Exploration:

2022 Midnight Exploration Highlights

- 41 holes completed and logged in 6,191 metre NQ2 diamond drilling program
- Targets tested in historical Midnight, IXL and OK mining areas
- Intersections of structurally-controlled mineralization with visible gold
- Assays using gravimetric and metallic screen protocols verified significant grades
- Up to 311 g/t Au in narrow-intervals from 30cm to 1.5 metres

Infrastructure: Full infrastructure including established roads/highways, electrical power, water and natural gas. Supporting industries in close proximity, close to Canada/US border, nearby rail access and closest port is Vancouver, B.C.

Status:

Plans

Geological compilation of the Company database from 2006-2022 with Leapfrog 2D and 3D mapping of current and historical drilling and underground workings, and recently-received high-resolution LiDAR orthophoto and bare-earth topographic control, will be used to evaluate geochemical assays, structural features and geospatial significance of broad alteration, sulphidation and lithological controls in the mineralizing system and will precede a 2023 core drilling program, and additional proposed boot-on-the-ground gold prospecting of the Company's claims.

History:

Mining History

The Rossland District is the second largest gold-producing camp in the Province. Mining produced over 3 million ounces of gold and 3.5 million ounces of silver during the boom of 1899 to 1928.

Total recorded historical production of 6.2 million tons at an average grade of 0.47 opt gold (Au), 0.6 opt silver (Ag) and 1.1% copper (Cu).

The Midnight property is located at the west end of the Rossland Camp on the east-facing slope of OK Mountain.

Located between the Cascade and Paterson highways, the IXL, Midnight and OK crown granted claims produced an estimated 30,000 ounces of gold from narrow, extremely high grade, free gold-bearing quartz veins that grade 1-5 oz/t Au, and average nearly 3 oz/t.





West High Yield (W.H.Y.) Resources Ltd.

Midnight Gold Project

www.whresources.com

TSXV: WHY

2022 Midnight Drilling Highlights

Hole #	Sample #	From (m)	To (m)	Interval (m)	Au g/t*
MN22-02	212571	48.50	50.00	1.50	36.1*
	212583	65.00	66.50	1.50	7.94
	212584	66.50	68.00	1.50	17.9*
	212585	68.00	69.50	1.50	8.61
	212587	69.50	71.00	1.50	22.6*
MN22-03	212605	39.10	41.50	2.40	12.15*
	212606	39.10	41.50	2.40	13.6*
	212621	60.00	61.50	1.50	20.7*
MN22-04	225511	54.05	55.25	1.20	38.4*
MN22-05	225664	55.65	57.15	1.50	8.44
	225666	58.65	60.15	1.50	15.7*
	225667	60.15	61.65	1.50	14.3*
	225674	68.40	69.45	1.05	33.7*
	225677	69.95	70.25	0.30	311**
MN22-07	225845	44.25	45.30	1.05	5.39
MN22-08	229012	38.70	39.40	0.70	15.85*
	229013	39.40	40.10	0.70	6.88
MN22-09	229333	106.95	108.45	1.5	7.23
MN22-09	229335	205.10	206.60	1.5	37.9*
MN22-13	228558	72.35	72.65	0.30	154**
	228657	185.70	186.20	0.50	21.4**
MN22-13	228558	72.35	72.65	0.30	154
MN22-13	228657	185.70	186.20	0.50	21.4
MN22-13	228697	262.50	263.35	0.85	32.5*
MN22-18	229446	42.50	44.00	1.50	9.51
MN22-18	229447	44.00	45.50	1.50	6.52
MN22-18	229448	45.50	47.00	1.50	13.55*
	229435	108.00	109.00	1.00	4.89

* Au GRA-21 FAA with gravimetric analysis for samples >10 g/t

**SCR24-B screen metalics, Au-AA26 FAA for samples with visible gold

2022 Midnight Drilling Program

A total of 31 collar locations fully permitted for the 2022 program.

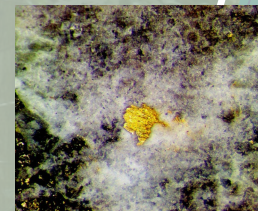
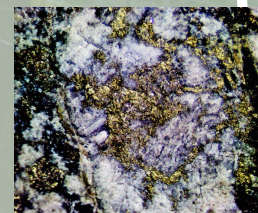
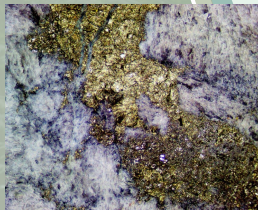
Focused on identifying extensions to zones of known Midnight mineralization, areas with potential within and peripheral to the OK and IXL historical mines, and deep targets below the known footprint of mineralization.

Collared around the Midnight mine workings on targets from surface to 200 metres depth to test extent of the historical high-grade Baker Vein.

Targets occurred along the Listwanite Zone (quartz-carbonate-serpentine-talc) which straddles the east-northeast trending fault contact between the OK ultramafic intrusion and the Jurassic-age andesites to the north.

WHY used second and third drill to expand outside Midnight-Baker and to explore deeper targets from 200 metres to >600 metres transecting the andesite-ultramafic contact and below the Baker Vein from the Midnight and neighbouring OK and IXL claims.

The drills also targeted high-grade polymetallic Au-Ag-Cu-Pb, massive to stockwork-style pyrrhotite and pyrite in silicified andesites from the OK Mine area.



2006-2011 Highlights

Hole #	From (m)	To (m)	Interval (m)	Au g/t
MN08-1	20.5	21.6	1.1	35.78
MN08-1	95.5	96.0	0.5	48.39
MN09-4	31.3	39.4	8.1	12.2
	INCL	32.8	35.5	2.7
INCL			1	85.4
MN09-6	13.6	26.8	13.2	7.4
INCL	14.9	15.5	0.6	38.21
INCL	17.0	17.5	0.5	53.30
MN09-6	47.4	48.4	1.0	41.35
MN09-6	64.7	68.7	4.0	10.40
MN09-10	41.2	43.6	2.4	15.27
MN09-11	30.9	46.3	15.4	8.97
INCL	39.8	41.8	2.0	47.60
MN09-12	45	57	12	4.99
INCL			1.5	28.25
MN09-14	17.2	29.5	12.3	7.07
MN09-15	13.9	18	4.1	40.11
INCL	15.5	16.3	0.8	198.00
MN09-16	96.5	98.5	2.0	25.68
MN09-23	48.3	50.5	2.2	22.43
MN09-23	64.5	66.4	1.9	24.69
MN09-24	20.5	21.9	1.4	36.42
MN09-24	28.9	33.5	4.6	25.16
	INCL	29.5	31.0	1.5
MN10-3	61.50	62.70	1.2	72.4
MN10-3	68.70	72.30	3.6	23.5
MN10-3	87.90	97.40	9.5	24.5
MN10-5	55.70	60.70	5.0	13.3
MN10-11	91.0	93.0	2.0	73.2
SR06-3	46.30	47.20	0.90	40.10
SR06-5	103.90	105.50	1.60	18.15
SR06-6	18.30	19.20	0.90	51.02
SR06-7	16.30	24.80	8.50	11.69
SR06-8	36.10	42.40	6.30	27.90
SR06-11	22.10	29.30	7.20	10.21
	INCL	28.20	29.30	1.10
SR06-16	36.88	40.54	3.66	15.9
SR06-18	142.95	143.20	0.25	36.30